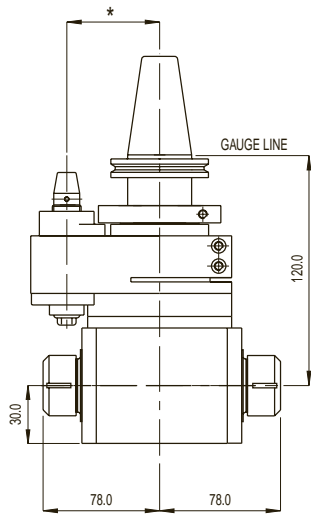
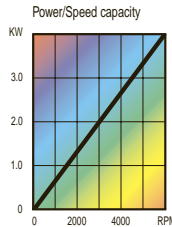
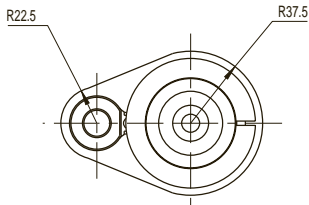


RAD 120 D

RIGHT ANGLE MILL/DRILL/TAP DOUBLE ENDED



The Double Ended RAD-120 is able to accommodate end mills, drills and tension tap collets.

- Auto tool change capability
- Alternative drive tapers available
- Maintenance free sealed unit

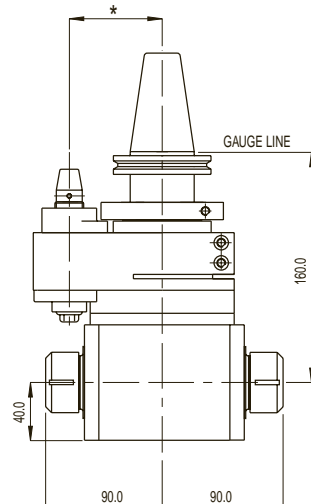
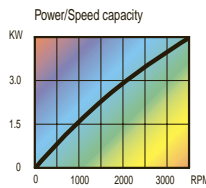
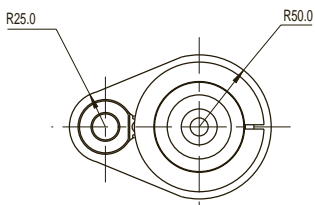
* Pin centre distance to suit application



Max. speed	6,000 rpm
Max. tool shank dia.	10 mm / 3/8"
Max. tapping size	M6 / 1/4"
Ratio	1:1
Rotation	Opposite
Drive taper	40 BT-CT-DIN-HSK
Tool holding	Collet chuck ER16
Max. weight without tooling	5.4 kg / 12 lbs

RAD 160 D

RIGHT ANGLE MILL/DRILL/TAP DOUBLE ENDED



The Double Ended RAD-160 is able to accommodate end mills, drills and tension tap collets.

- Auto tool change capability
- Alternative drive tapers available
- Maintenance free sealed unit

* Pin centre distance to suit application



Max. speed	3,500 rpm
Max. tool shank dia.	16 mm / 5/8"
Max. tapping size	M12 / 1/2"
Ratio	1:1
Rotation	Opposite
Drive taper	40 BT-CT-DIN-HSK
Tool holding	Collet chuck ER25
Max. weight without tooling	7.5 kg / 17 lbs