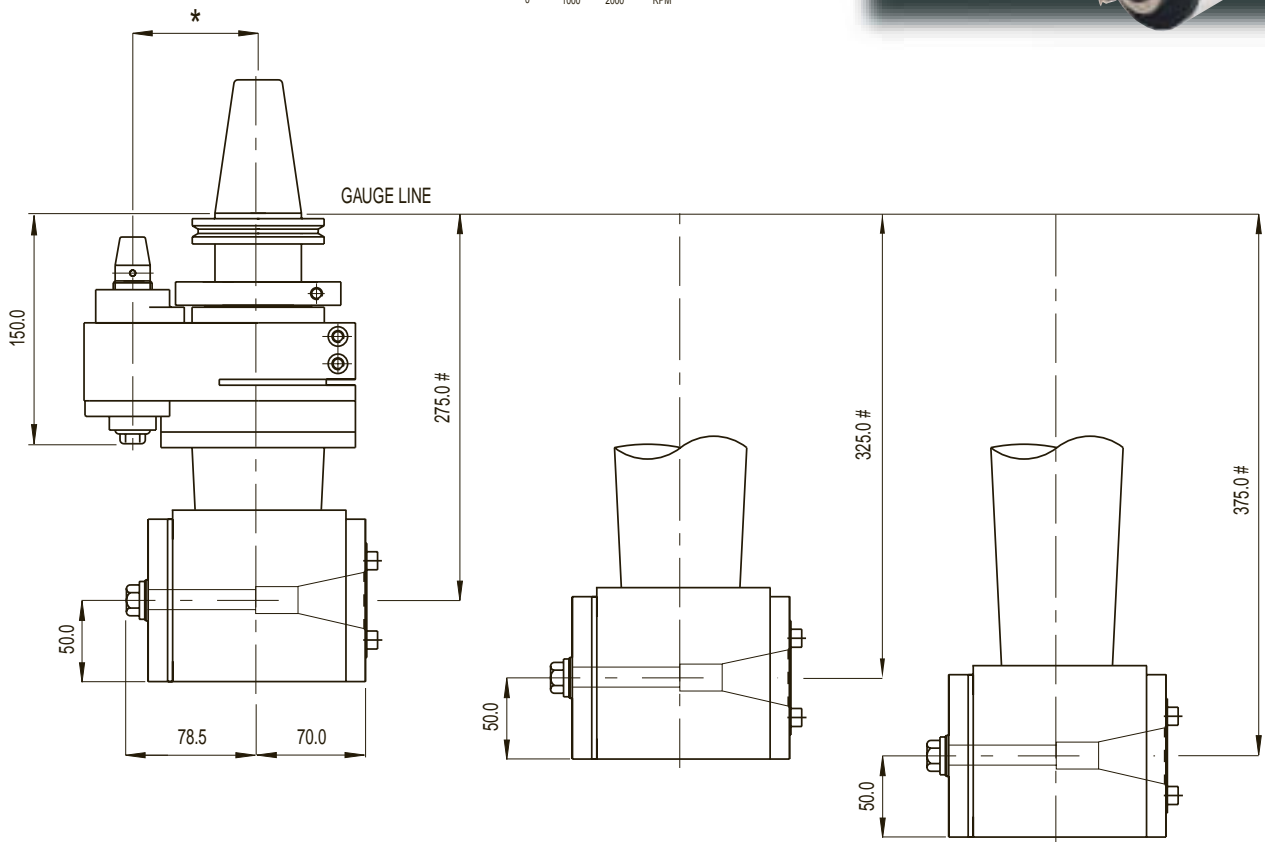
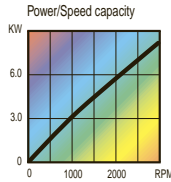
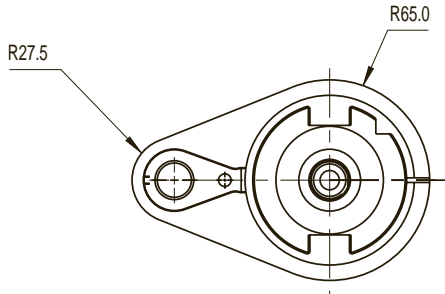


RAM 225 EX
EXTENDED RIGHT ANGLE MACHINING



RAM 225/275

RAM 225/325

RAM 225/375

The RAM-275/325/375 is the extended version of the RAM-225.

- Auto tool change capability
- Alternative drive tapers available
- Maintenance free sealed unit

+3 mm with BT

* Pin centre distance to suit application

Max. speed	3,000 rpm
Max. tool shank dia.	30 mm / 1.3/16"
Max. tapping size	M22 / 7/8"
Ratio	1:1
Rotation	Opposite
Drive taper	50 BT-CT-DIN-HSK
Tool holding	ISO 30 taper
Max. weight without tooling	275 - 19.0 kg / 42 lbs
Max. weight without tooling	325 - 21.1 kg / 47 lbs
Max. weight without tooling	375 - 22.7 kg / 51 lbs