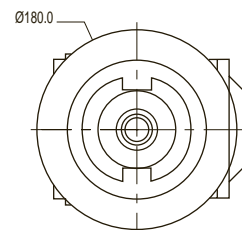
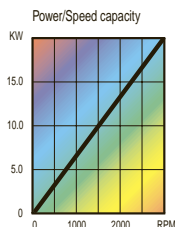




RAM 400-40

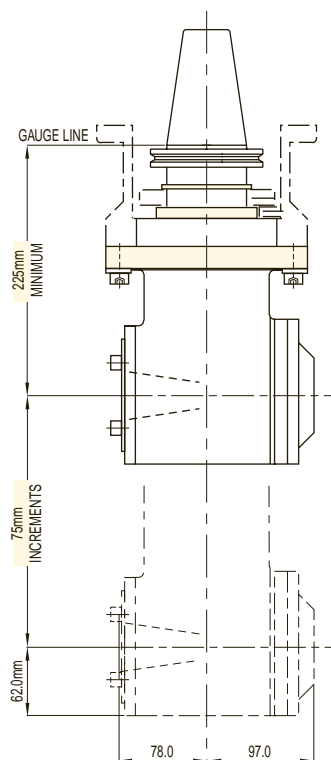
RIGHT ANGLE MACHINING (WITH ISO 40 TAPER TOOLING)



Max. speed	3,000 rpm
Ratio	1:1
Rotation	Opposite
Drive taper	50/60 BT-CT-DIN-HSK
Tool holding	ISO 40 taper
Max. weight without tooling	225mm: 35kg / 77lbs
	300mm: 40kg / 88lbs
	375mm: 45kg / 99lbs
	450mm: 50kg / 110lbs

A heavy duty unit with milling capability but with the flexibility of interchangeable tooling adaptors to facilitate the location of drills, taps, end mills, shell mills etc. The tooling is held in position with a manual draw-bar and accurately located on an **ISO 40 taper**.

The RAM 400-40 is available in extended form from its basic 225mm dimension (gauge line to spindle centre) in 75mm increments to 450mm.



For full details of ISO 40 Taper Tooling turn to page 31

