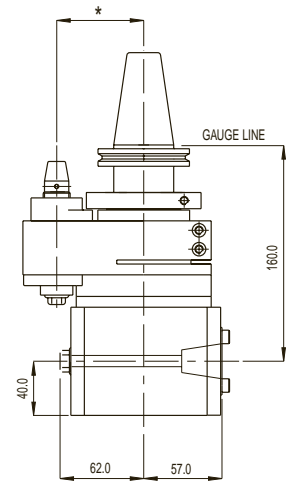
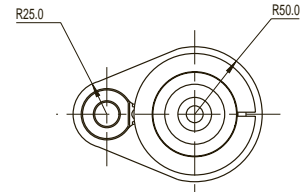
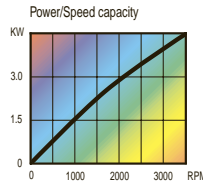




RAM 160-20

RIGHT ANGLE MACHINING

(WITH ISO 20 TAPER TOOLING)



Max. speed	3,500 rpm
Max. tool shank dia.	16 mm / 5/8"
Max. tapping size	M12 / 1/2"
Ratio	1:1
Rotation	Opposite
Drive taper	40 BT-CT-DIN-HSK
Tool holding	ISO 20 taper
Max. weight without tooling	6.6 kg / 15 lbs

A robust unit with milling capability but with the flexibility of interchangeable tooling adaptors to facilitate the location of drills, taps, end mills, shell mills etc. The tooling is held in position with a manual draw-bar and accurately located on an **ISO 20 taper**.

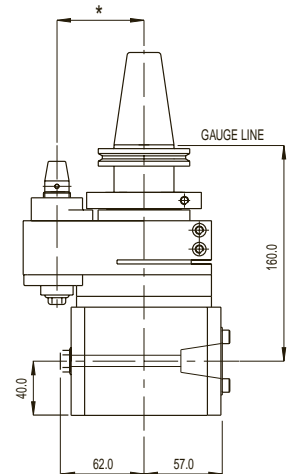
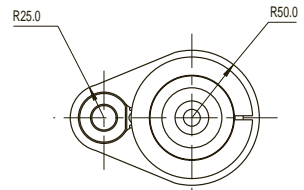
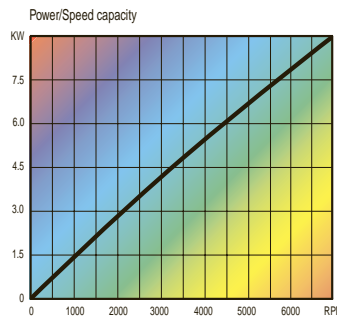
* Pin centre distance to suit application



RAM 160-20 HS

HIGH SPEED RIGHT ANGLE MACHINING

(WITH ISO 20 TAPER TOOLING)



Max. speed	7,000 rpm
Max. tool shank dia.	16 mm / 5/8"
Max. tapping size	M12 / 1/2"
Ratio	1:1
Rotation	Opposite
Drive taper	40 BT-CT-DIN-HSK
Tool holding	ISO 20 taper
Max. weight without tooling	6.6 kg / 15 lbs

* Pin centre distance to suit application

For full details of ISO 20 Taper Tooling turn to page 31

