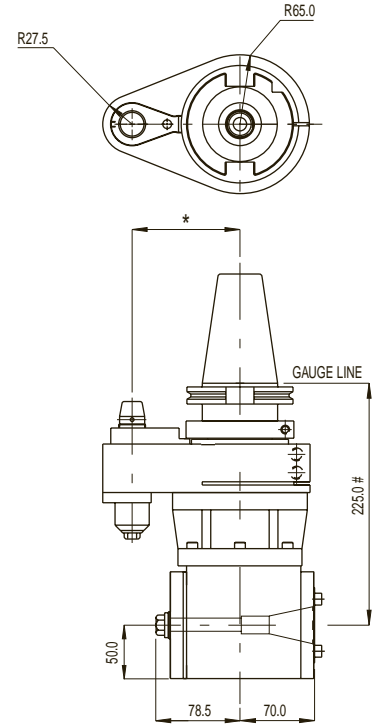
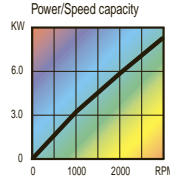




**RAM 225-30**  
**RIGHT ANGLE MACHINING**

**(WITH ISO 30 TAPER TOOLING)**



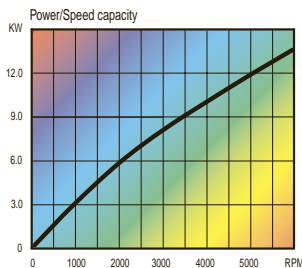
Max. speed	3,000 rpm
Max. tool shank dia.	30 mm / 1.3/16"
Max. tapping size	M22 / 7/8"
Ratio	1:1
Rotation	Opposite
Drive taper	50 BT-CT-DIN-HSK
Tool holding	ISO 30 taper
Max. weight without tooling	15.5 kg / 35 lbs

A robust unit with milling capability but with the flexibility of interchangeable tooling adaptors to facilitate the location of drills, taps, end mills, shell mills etc. The tooling is held in position with a manual draw-bar and accurately located on an **ISO 30 taper**.

# 228 mm with BT

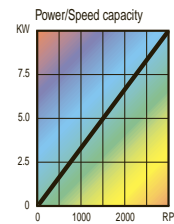
\* Pin centre distance to suit application

**RAM 225-30 HS**  
**HIGH SPEED**  
**RIGHT ANGLE MACHINING**  
**(WITH ISO 30 TAPER TOOLING)**



Max. speed	6,000 rpm
Max. tool shank dia.	30 mm / 1.3/16"
Max. tapping size	M22 / 7/8"
Ratio	1:1
Rotation	Opposite
Drive taper	50 BT-CT-DIN-HSK
Tool holding	ISO 30 taper
Max. weight without tooling	15.5 kg / 35 lbs

**RAM 225-30 HD**  
**HEAVY DUTY**  
**RIGHT ANGLE MACHINING**  
**(WITH ISO 30 TAPER TOOLING)**



Max. speed	3,000 rpm
Max. tool shank dia.	30 mm / 1.3/16"
Max. tapping size	M22 / 7/8"
Ratio	1:1
Rotation	Opposite
Drive taper	50 BT-CT-DIN-HSK
Tool holding	ISO 30 taper
Max. weight without tooling	16.0 kg / 36 lbs

**For full details of ISO 30 Taper Tooling turn to page 31**

