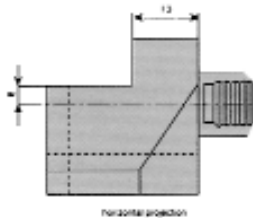
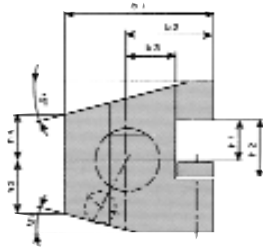
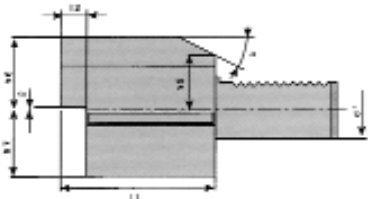


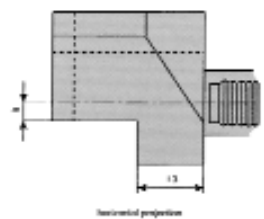
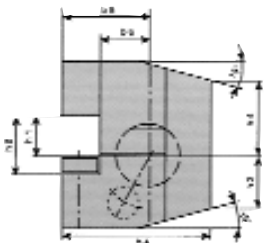
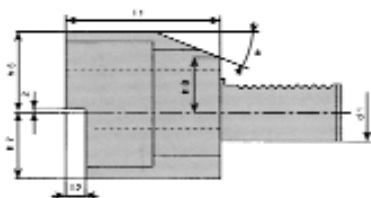
**■ C3 Turning Toolholder Overhead for SquareTool Form C3 Right Hand**



Ordering No.	D1	B1	B2	B3	H1	H2	H3	H4	H6	H7	H9	L1	L2	L3	a
VDI-16-C3	16	43	24	13	12	17	15	15	22	20	19	44	5	20	30°
VDI-20-C3	20	52	27	13	16	22	19	19	30	25	23	55	7	30	30°
VDI-20-C3-65	20	65	40	26	16	22	19	19	30	25	23	50	-	30	30°
VDI-30-C3	30	70	35	17	20	29	26	22	38	35	30	70	10	30	25°
VDI-40-C3	40	85	42.5	21	25	34	35	30	48	42.5	-	85	12.5	30	-
VDI-50-C3	50	100	50	26	32	41	42	35	60	50	-	100	16	40	-
VDI-60-C3	60	125	62.5	33	32	41	46	42.5	62.5	62.5	-	125	16	40	-

DIN.69880 Part 3  
VDI 3425 Sheet 2

**■ C4 Turning Toolholder Overhead for SquareTool Form C4 Left Hand**



Ordering No.	D1	B1	B2	B3	H1	H2	H3	H4	H6	H7	H9	L1	L2	L3	a
VDI-16-C4	16	43	24	13	12	17	15	15	22	20	19	44	5	20	30°
VDI-20-C4	20	65	40	26	16	22	19	19	30	25	23	50	-	30	30°
VDI-30-C4	30	76	41	23	20	29	26	22	38	35	30	70	10	30	25°
VDI-40-C4	40	90	47.5	25.5	25	34	35	35	48	42.5	-	85	12.5	30	-
VDI-50-C4	50	105	55	30.5	32	41	42	35	60	50	-	100	16	40	-
VDI-60-C4	60	125	62.5	33	32	41	46	42.5	62.5	62.	-	125	16	40	-

DIN.69880 Part 4  
VDI 3425 Sheet 2